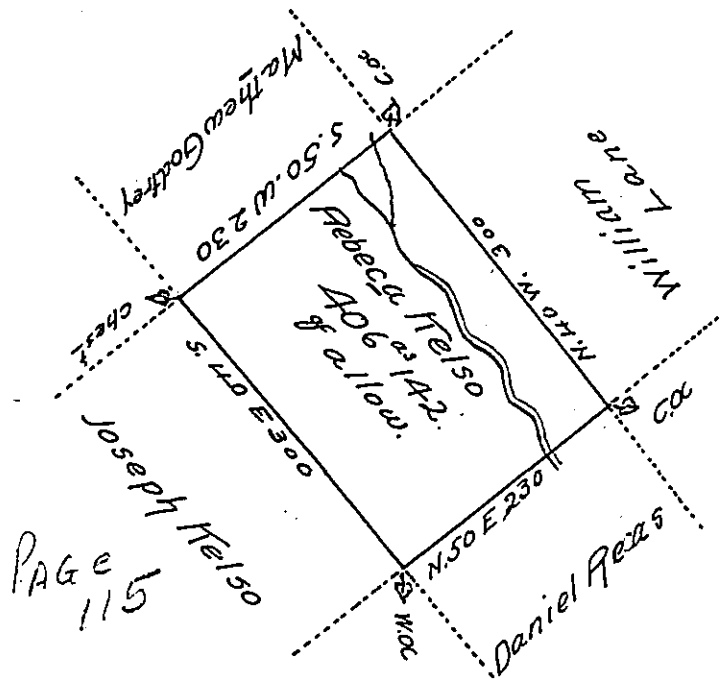


P 23-460



Situate on the Waters of Mash Creek in Bald Eagle Township
 in the County of Mifflin Surveyed on the 22 day of May 1794
 for Rebecca Telso by Virtue of her Warrant bearing date on
 the 25 day of January 1794 Containing four Hundred Six acres
 one Hundred forty two perches of the usual allowance -

To J. Wallis D.S

To Daniel Brodhead Esq
 Surveyor General.

IN TESTIMONY that the above is a copy of the original remaining on file in
 the Department of Internal Affairs of Pennsylvania, made
 conformably to an Act of Assembly approved the 16th day of
 February, 1833, I have hereunto set my Hand and caused
 the Seal of said Department to be affixed at Harrisburg,
 this thirty first day of July 1905

George D. Brown
 Secretary of Internal Affairs.